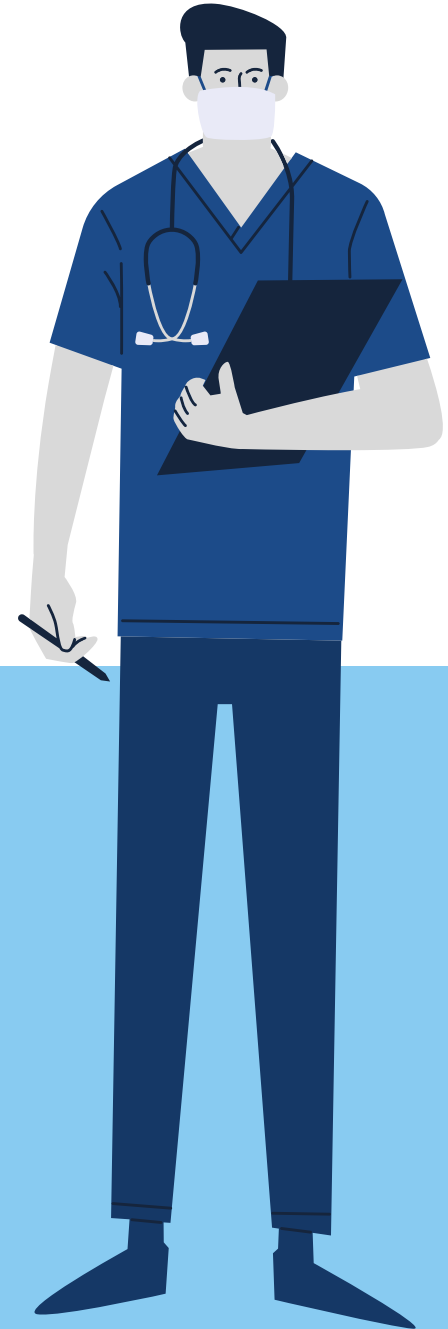




**ON YOUR VISITS TO THE
MAXILLOFACIAL INSTITUTE,**

**HELP US PREVENT THE
SPREAD OF COVID-19**

To guarantee the safety of our patients and workers, we have incorporated prevention and health safety measures in accordance with the strictest international protocols.





For this, on your next visits to the
Maxillofacial
Institute,
it is necessary
to take the
following
precautions:

Avoid coming accompanied

If it is essential,
bring a single
companion.



Avoid bringing many things or accessories

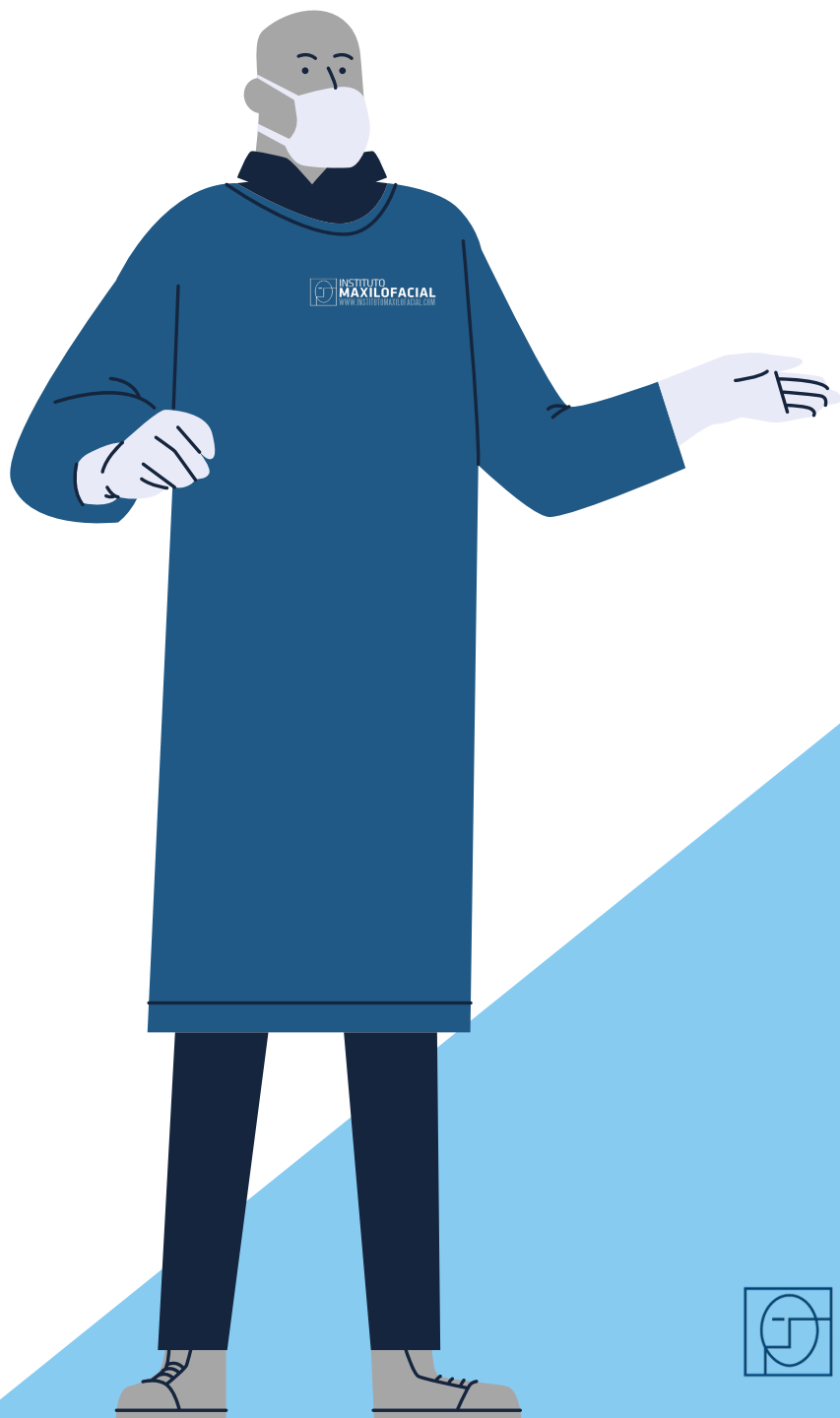
Bring only the essential; disinfection process will be much more agile and effective.





Be on time for your scheduled appointment

Neither early nor
late. This way we
will avoid collapses
in the waiting
rooms



Upon arrival at the Institute

You'll find that before entering you have to follow some steps:

1.

First, we're going to take your temperature.



2.



Then, disinfect your hands / gloves with disinfectant gel

3.

And put on the gloves that we will provide (if you don't have your own)



4.



Now, put the disposable shoe covers over your shoes

5.

Cover your hair with the protective cap

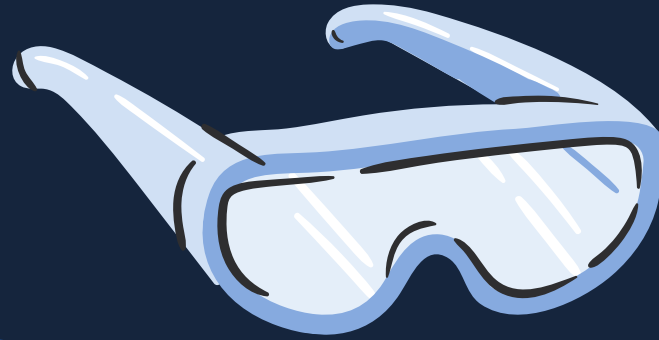


6.



Put on a protective mask (if you don't have one already)

7.



Put on the protective eyewear.

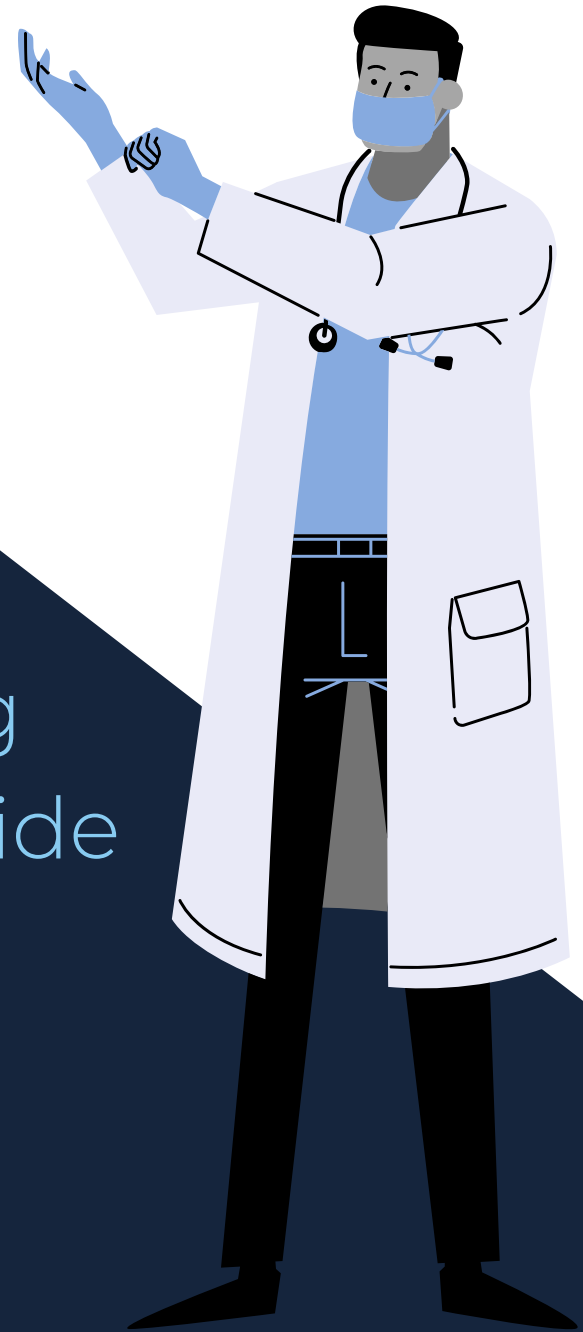
8.

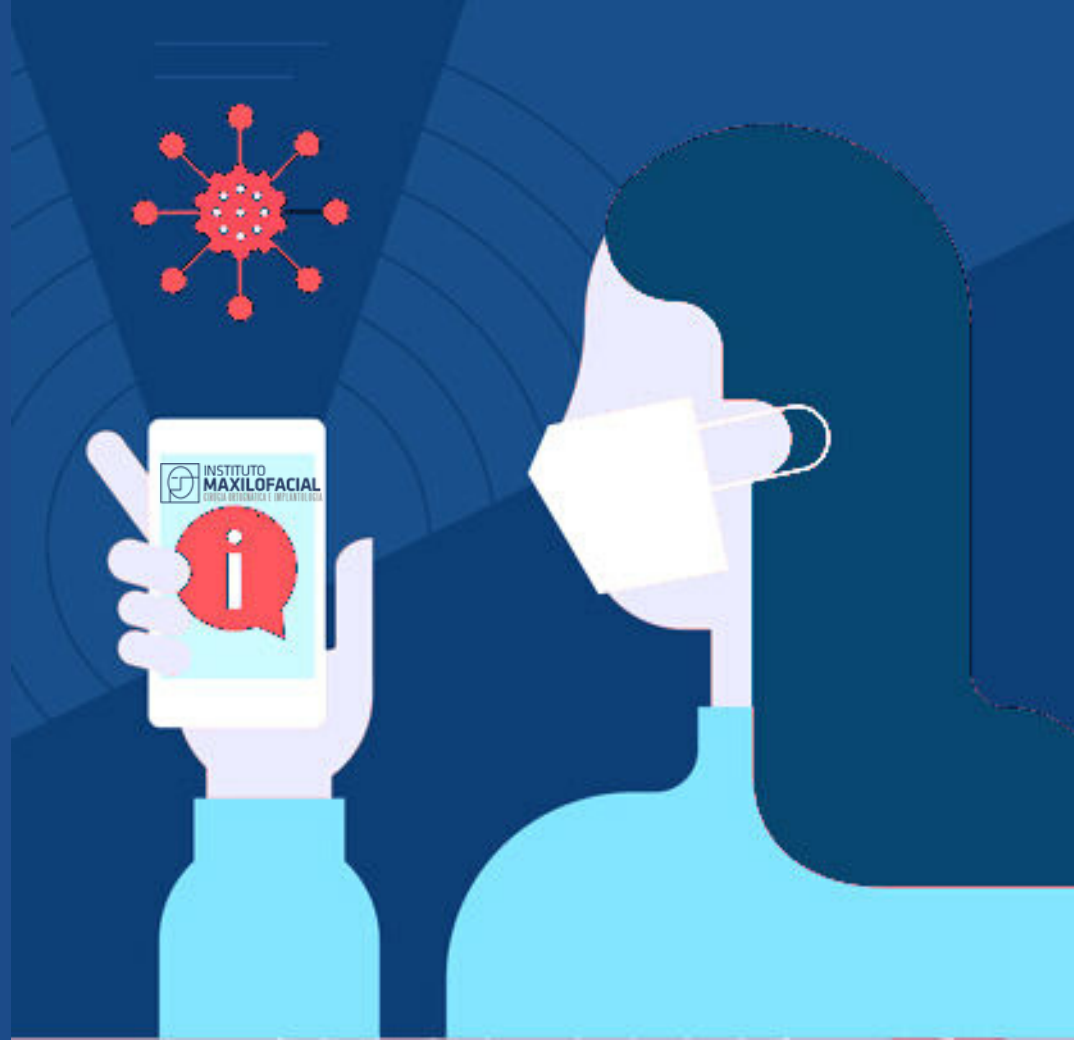
And finally, disinfect your gloves with gel.



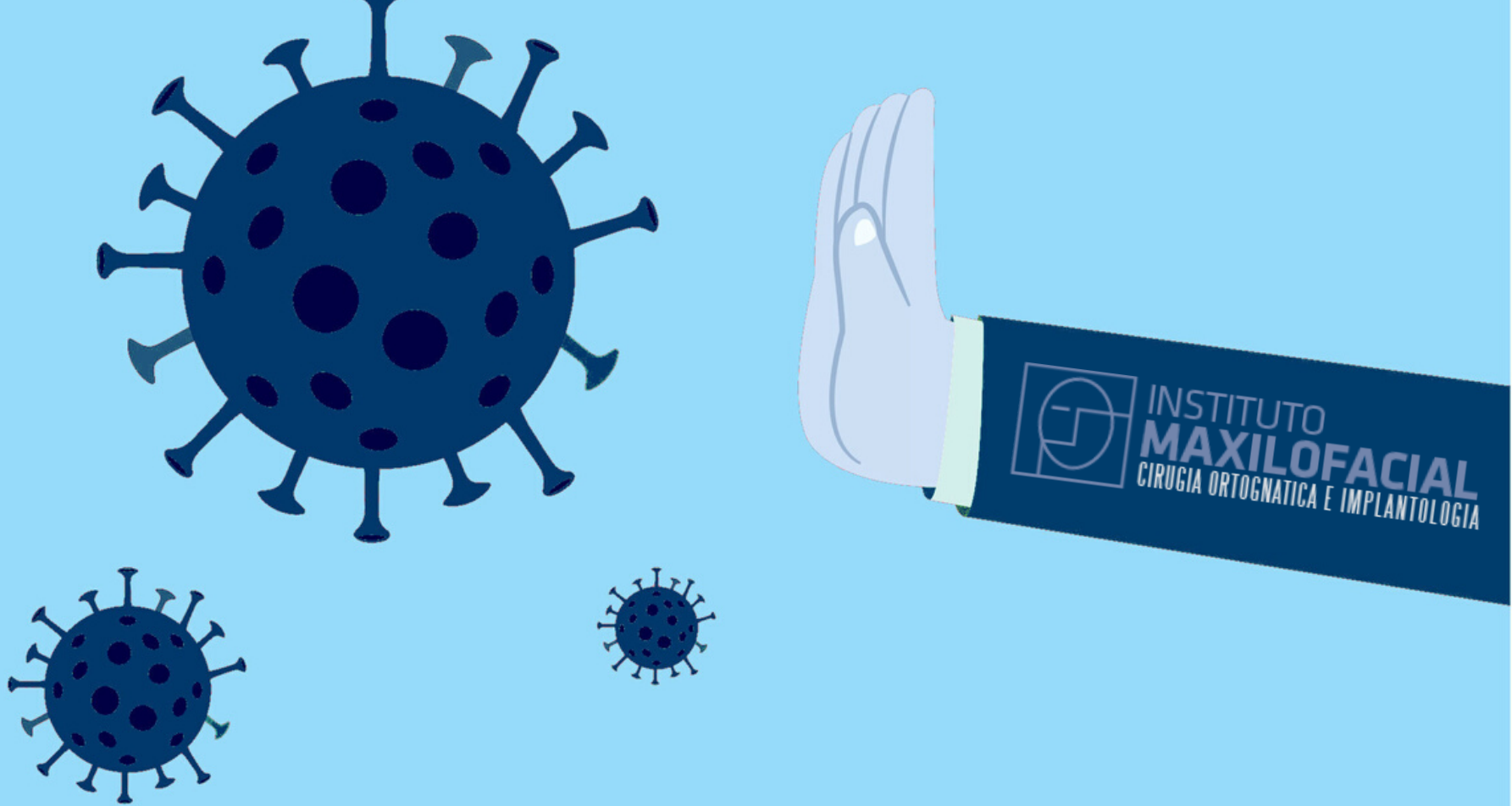
*** All this material will be provided by us upon arrival at the Institute.**

Once all precautions have been taken, the visit with your specialist will take place, also maintaining strict security measures inside the box.





Back at home, **call us** if during the days following your visit **you notice any symptoms or develop the disease.**



With your help, we will make the facilities of the Maxillofacial Institute a completely safe space against COVID-19.